

OUREA

USER MANUAL

PRECAUTIONS

Battery and charging:

Charge at 0°C ~45°C, discharge at -20°C ~60°C, keep the battery dry, do not put the battery in acidic or alkaline liquid, avoid rain, keep away from fire, heat and high temperature environment. It is strictly forbidden to connect the positive and negative poles of the battery reversely, and it is strictly forbidden to damage, insert the battery or short-circuit the battery. Please use the original special charger when charging, do not exceed 6 hours, and the charging current does not exceed 2A. When not in use for a long time, please store the battery in a cool and dry place, and charge the battery for five hours a month. The user must follow the instructions for use when charging, otherwise the consequences will be borne by the user. Pay attention to the battery type and applicable voltage that the charger can charge, and it is strictly forbidden to mix them. When charging, it should be placed in a ventilated environment, and it is strictly prohibited to charge in a confined space or in a hot sun or high temperature environment. When charging, first connect the battery and the charger, and then the power supply; when the battery is fully charged, first cut off the power supply, and then unplug the charger connector. When the green light is on, the power supply should be cut off in time. It is forbidden to connect the charger to the power supply for a long time without charging. During the charging process, if the indicator light is abnormal, a peculiar smell appears, or the charger casing is overheated, stop charging immediately and repair or replace the charger. During the use and storage of the charger, pay attention to avoid the entry of foreign objects, especially avoid the inflow of water or other liquids, so as not to cause a short circuit inside the charger. Try not to carry the charger with the bicycle. If you really need to carry it, you should place it in the toolbox after the shock absorption treatment is done. Do not disassemble or replace the accessories in the charger by yourself.

Riding:

Do not use it until you read the instructions carefully and understand the performance of the product; do not lend it to someone who can't manipulate the product for riding. Before riding the bicycle, check whether the brakes are working. Pay attention to the brake tightness. If the brake is too loose, use an Allen key to tighten it. Pay attention to increasing the braking distance when riding in rain or snow. Applicable age: 16 to 65 years old.

Please be sure to wear a safety helmet when riding a bicycle, follow the traffic rules, and do not drive on motorized lanes and roads with many pedestrians. Please check the tire pressure before riding, the recommended tire pressure is 40~65PSI.

Downhill and non-paved roads do not exceed 15KM/h.

When using the motor, please be careful not to hit it vigorously and keep the rotating shaft lubricated.

Riding beyond the maximum load is not allowed
(the maximum load is 120KG)

After use, the car can not be parked in the building hall, evacuation stairs, safety exits, and must be parked correctly in accordance with the safety rules.

One-handed riding is prohibited!

Disclaimer:

After riding, please store the bike in a place without sunlight and rain, not in residential buildings; always check the motor and brake; check the screws and the places that need to be fastened regularly, and tighten them regularly.

Recommended torque: (unit: kgf.cm) handlebar screw 60-80, handle screw 175-200, seat cushion screw 175-200, wheel screw 320-450;

The front and rear wheels of the vehicle should be located in the center of the front fork or frame;

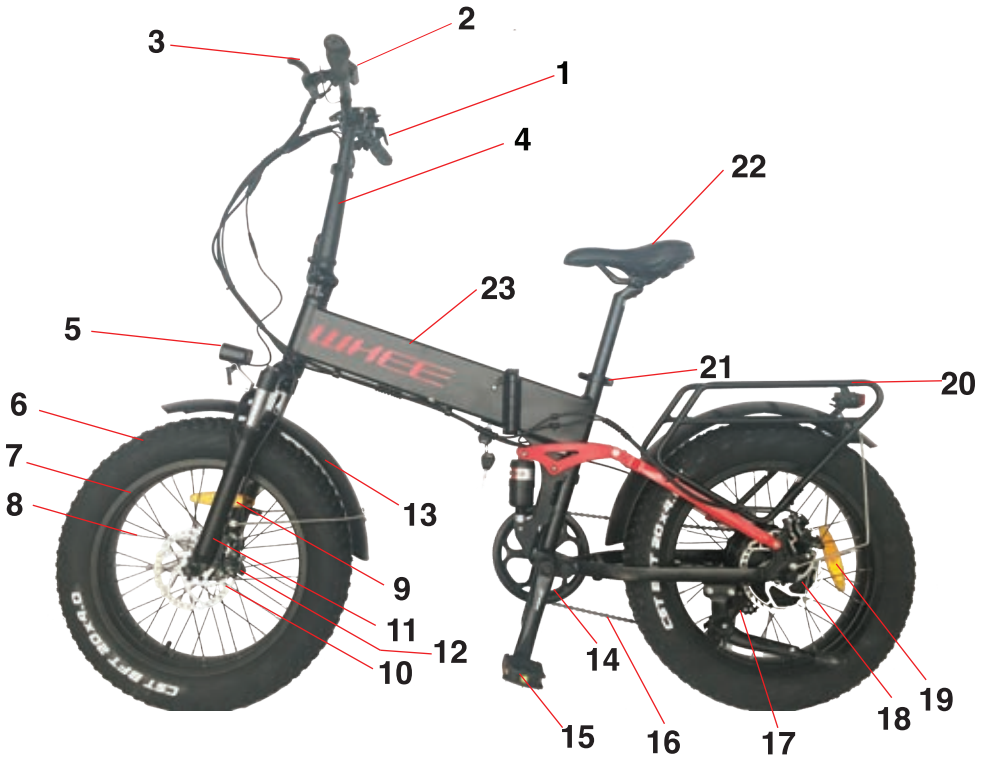
Always check the tire for scratches, cracks or excessive wear. The inner tube and the valve should be perpendicular to the wheel hub. Damaged or excessively worn tires need to be replaced immediately. Please find a professional technician to replace your tire. If your tire accidentally punctures and leaks, please contact a professional technician for repair or replacement.

Maintenance and care:

For the product model, specifications or related information mentioned in this User Manual, the company reserves the right of modification and final interpretation; the functions of the specific model mentioned in this User Manual are only applicable to that specific model;

The product models, specifications, or related information mentioned in the User Manual may be changed without notice; without prior written permission of the company, the User Manual may not be copied, modified, reproduced, transmitted, or published in any form. Please read the Manual carefully before using the product, and operate in accordance with the Manual, otherwise the company will not be liable for product damage or personal or property damage caused by improper use or error.

Product Function Illustration



- 1 Shift Lever
- 2 Central Display
- 3 Brake Lever
- 4 Stem
- 5 Headlight
- 6 Tire
- 7 Rim
- 8 Spoke
- 9 Reflector
- 10 Brake Disc
- 11 Front Fork
- 12 Brake
- 13 Front Fender

- 14 Chainwheel
- 15 Pedal
- 16 Chain
- 17 Rear Derailleur
- 18 Motor
- 19 Rear Reflector
- 20 Rear hanger
- 21 Seat Tube Adjustment
- 22 Saddle
- 23 Lithium Battery

Product Installation



1. The state of the bicycle after being removed from the carton is as shown in the picture above. First cut the nylon ties and separate the front wheels from the frame come out and remove the protective foam.



2. Please the bike shown in the picture above



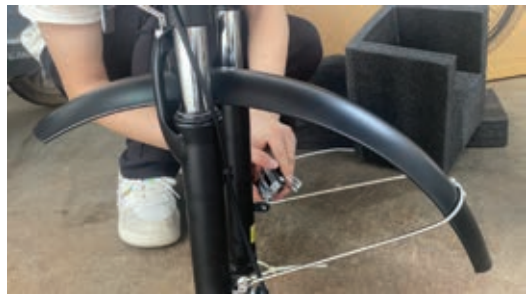
3. Insert the handlebar into the folding standpipe and lock it with quick disassembly, then staright the folding standpipe and lock it.



After completion, the state is like the above picture on the right.



4. Remove the bolt out at the front fork and install the mud guard and light.



Remove the bolt out at the bottom part of the front fork and tight the mud guard.



5. Loosen the bolt at the middle of the wheel and remove it, but keep it for further use. Lift the bike and put the wheel in.



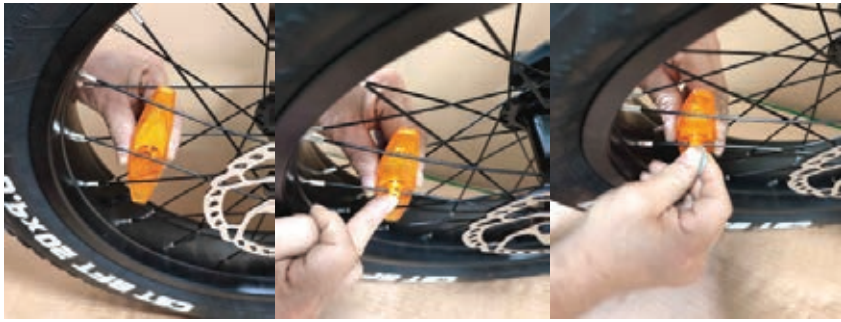
6 Lock the wheel to the fork as shown in the picture above.



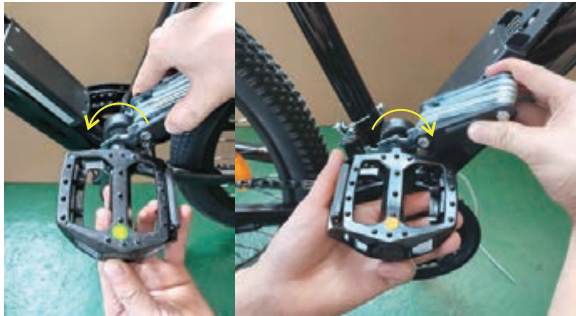
6 Put the bolts you removed from step 5 back on, and tight them hard. The front wheel installation is finished.



7 Open the accessories carton, There are accessories inside as shown in the picture above.



8 Place the reflector on the spoke, press the card into the hole and use the tool to rotate the clip for locking.



Folding Operation Illustration



1 Unscrew the plastic safety buckle on the standpipe quick release, and then release the quick release, and the riser can be folded to the left. The standpipe upper and lower adjustable quick release can adjust the height of the standpipe.

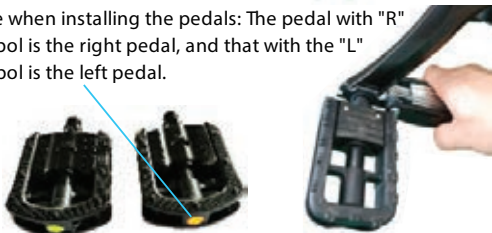


2 Rotate the folding safety buckle, then pull the folding shackle out to fold the frame.

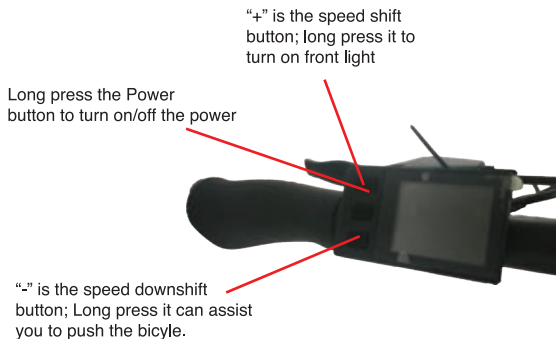
Note: The pedals are not installed at the factory and can be installed by using the special wrench coming with the vehicle.



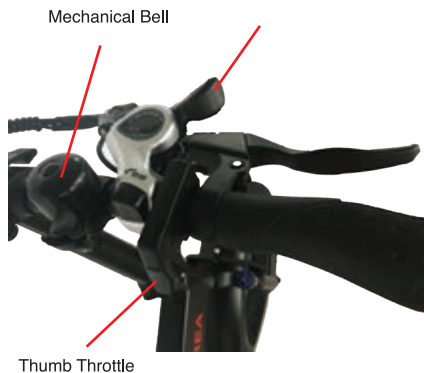
Note when installing the pedals: The pedal with "R" symbol is the right pedal, and that with the "L" symbol is the left pedal.



Handlebar Illustration



Left Handle bar



Right Handle bar

Function Introduction:

1 Turn on/off: refer to the “left handle bar” figure, press the button in the middle to turn on/off the power of the display.

2 Display: The display screen lights up after power on, displaying information such as power, speed, motor speed, mileage, etc. The power speed is initially 0, press the “+” and “-” button to increase and decrease the power speed of electric drive mode.

3 Front light: Refer to the “left handle bar” figure, long press the “+” button to turn on/off the front light.

4 Power-assisted mode: power-assisted riding, step on the pedals of the bicycle, and automatically start electric power after a certain speed. If you dont need assistance, you can turn off the power of the display.

5 Speed transmission: Refer to the “right handle bar” figure, when the bicycle is running, you can change the mechanical speed by flipping the shift levers.

6 Electric mode: Refer to the “right handle bar” figure, press the thumb throttle, and the bicycle can accelerate forward. The Greater the pressing range, the faster the bicycle will run. For safety reason, please press the thumb throttle lightly and accelerate slowly.

Product Parameter

Dimensions	Main material	Aluminum alloy
	Size of Frame	20"
	Tire Size	20 x 4
	Unfold Size/fold size(cm)	166x62x127 / 92x52x76
Performance	Weight	30kg
	Maximum Load	120kg
	Max.speed	32km/h
	Range	30-45km
	Waterproof level	IPX6
	Speed transmission	21 speed Shimano
Electrical Specification	Battery Type	Samsung Lithium Battery
	Capacity and voltage	48V 12.8AH
	Motor	500W 48V
	Charging time	6-8 hours
	Input Voltage	120V
Features	Front light	Yes
	Braking method	Front and rear disc brakes

Warranty

WHEEL provides an easy, reliable and efficient service for all products under our warranty. Please refer to the chart below for the warranty periods of various products and accessories starting from the date of purchase.

Our distributors, partners, sellers and re-sellers should provide after-sale services directly to their customers. If your **WHEEL** product has a warranty-related issue, please contact the seller from whom you purchased the product. You should provide all relevant order information, such as order numbers, invoices, receipts, etc.

Model	Components	Warranty
AGON	Frame	3 years
	Front Fork	1 year
	Controller	1 year
	Motor	1 year
	Charger	1 year
	Battery	6 months
	Control Panel (LCD)	6 months
	Chainwheel	6 months
	Freewheel	6 months
	Brake Assembly	6 months
	Thumb Shifter	6 months
	Front Derailleur	6 months
	Rear Derailleur	6 months
	Kickstand	3 months
	Front Light	6 months
	Pedal	3 months
Others	14 days	

Warranty Process

- ❖ Buyers have to provide sufficient proof of purchase.
- ❖ A description of the defect needs to be provided in order to issue a warranty claim.
- ❖ Visible proof of defect must be provided along with the item's serial number (if any).
- ❖ **WHEEL** must document what happens when buyers troubleshoot the products.
- ❖ You may need to return an item for quality inspection.
- ❖ When you return the defective product, you should put it in the original packaging or the packaging approved by the dealer.

Valid Proof of Purchase

- ❖ The order number of your online purchase from the **WHEEL**'s authorized reseller;
- ❖ Sales invoice;
- ❖ Dated sales receipt from the authorized **WHEEL**'s reseller;

Note: *more than one type of proof of purchase may be required to process a warranty claim (such as receipt of money transfer and confirmation of address that the item was originally shipped to).*

Warranty will be void in the following situations:

- ❖ The product is out of the warranty period.
- ❖ The product is lost or stolen.
- ❖ The product is free or complimentary.
- ❖ The product is used in inappropriate ways or conditions, including but not limited to: falls, extreme temperatures, water, improper operations.
- ❖ The product is not in its original state, such as modifications.
- ❖ The product has been used in combinations with accessories that is not compatible with the product.
- ❖ Buyers have no sufficient proof of purchase of products.
- ❖ Unsupported software or firmware has been installed to the product.
- ❖ When damage is caused by the customer, the customer is responsible for the costs for the repairs and shipment.
- ❖ Customers' personal items are sent to **WHEEL**, instead of the **WHEEL** products.



OUREA



DESIGNED IN CANADA

FOR MORE INFORMATION

PLEASE VISIT: WHEESPORTS.CA

